

Chelsea
Celeste
Designs

1" SQUARE

FOLD

DRESS FORM

MATERNITY PADDING

©2017 CHELSEA CELESTE DESIGNS

1/4" SA INCLUDED

SIDE

SIDE

DRESS FORM
MATERNITY PADDING
©2017 CHELSEA CELESTE DESIGNS

GRAINLINE

1/4" SA INCLUDED

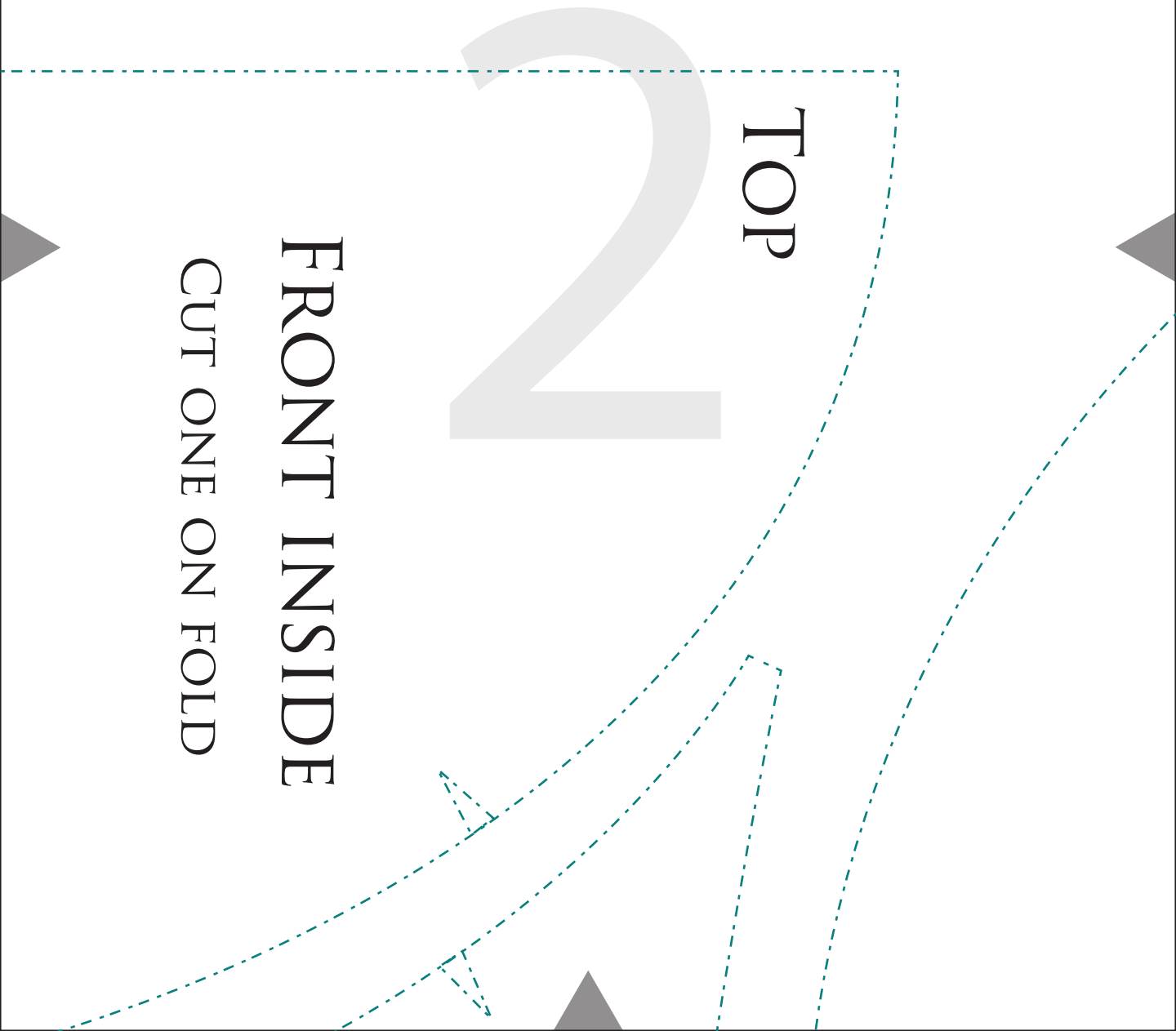
FOLD UNDER

ADDED SEAM ALLOWANCE GETS FOLDED
WHEN ADDING VELCRO OR SNAPS.

Materials: anything with a four way stretch; jersey knit, ITY, rayon, lycra, etc.

1/2 y/m

Supplies; sewing machine, serger (optional), pins, chalk, fabric, cotton batting, velcro, or snaps/snap tape.



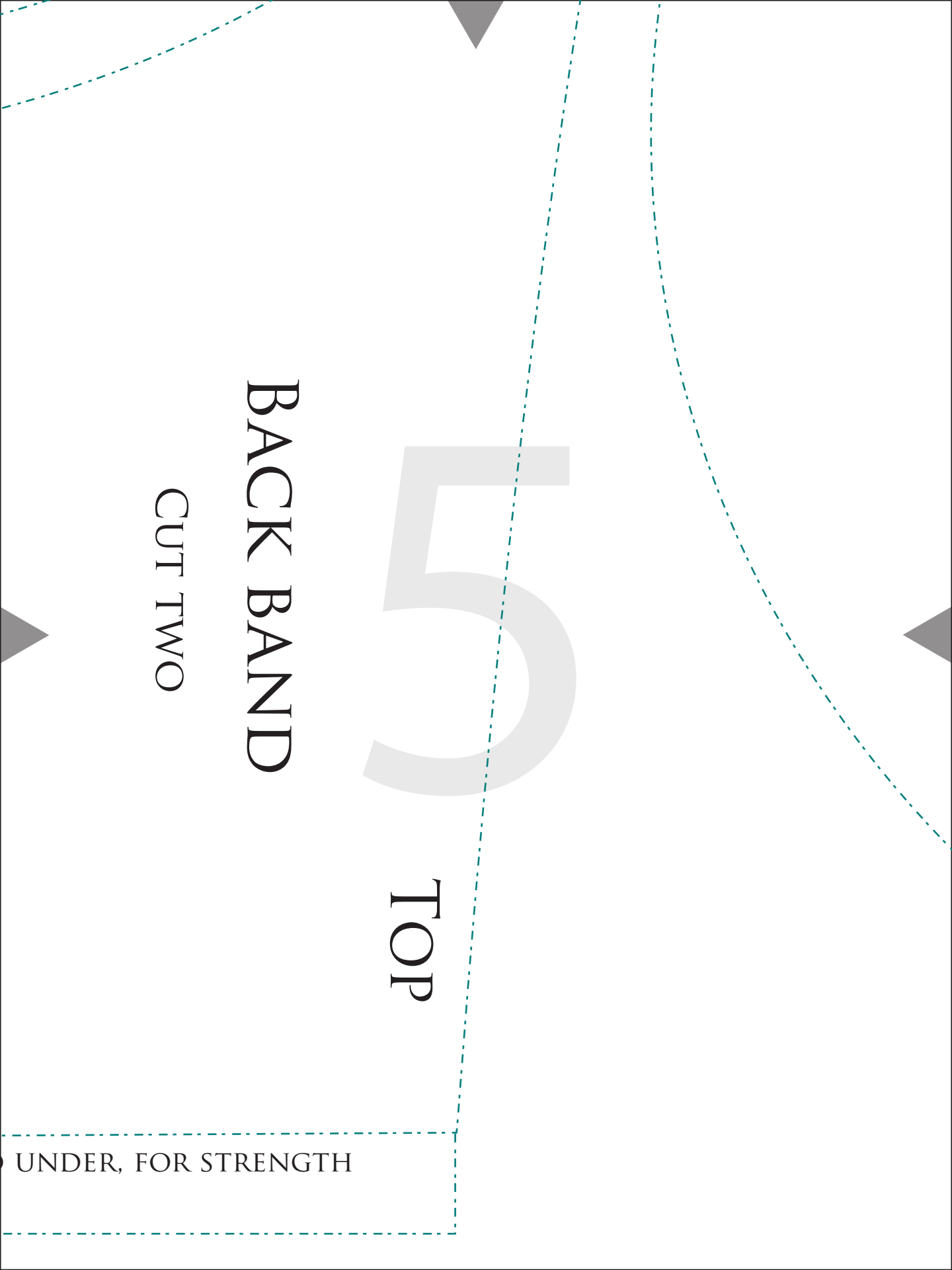
5

TOP

BACK BAND

CUT TWO

UNDER, FOR STRENGTH





GATHER ALL AROUND

FRONT OUTSIDE

CUT ONE ON FOLD

DRESS FORM
MATERNITY PADDING
©2017 CHELSEA CELESTE DESIGNS

FOLD

6

1/4" SA INCLUDED

Dress form maternity padding construction instructions;

Fold your stretch fabric in half (any way your patterns will fit), and place the front inside and front outside patterns on the fabric, making sure you line up the fold of the fabric with "fold" marked on the pattern. *Make sure you mark the notches. Cut out your pieces.

Fold any remaining fabric in half and place the back band pattern with the grainline going in the proper direction, and cut out your piece.

Run a gathering stitch all the way around the front outside panel, leaving a long thread tail at the beginning and end. Pulling the bottom thread, gather up the panel so that its the same circumference as the front inside panel.

Taking the back bands, fold the center back seam allowance, inward 3/4", and stitch it down.

Stitch on the velcro or snaps to the back bands, on top of the folded seam allowance. *Remember that one side of the velcro goes on the topside of one panel, and the underside of the other panel.

Place one of the back band panels directly on top of the front inside panel, lining up the sides, with the "top" of the back band going the same direction as the "top" of the front inside. Now, the side curves will be going in opposite directions, don't worry. Pin the notch marks together, and then pin the rest of the sides together.

Do the same with the other back panel.

Stitch up the sides that you have pinned - this takes a bit of coordination and playing around.

Leaving the back panels facing the center of the front inside, place the front outside panel directly on top, encasing the back panels in between the other two layers. Pin the two layers together. Then stitch or serge all the way around, leaving a two inch gap before you end.

Flip the whole thing right side out, then taking your cotton batting, stuff it inside the hole you left. *Tip; you may want to "break up" or fluff up the batting before stuffing it inside, so that it's not so lumpy.

Turning the seam allowance toward the inside, hand stitch the opening, closed.

You're finished!